



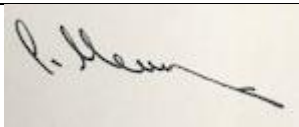

Barking Abbey School

Drug, Alcohol and Tobacco Policy

Policy Adoption

Date	Reviewed/Adopted by	Next review date	Review Frequency
October 2022	Full Governing Body	Autumn Term 2023	Annually

Governing Body Approval

Signed	Title
	Chair of Governors
	Headteacher

Barking Abbey school aims to foster co-operation within the school community to promote the health and safety of all its members and will take appropriate action to safeguard their well-being.

Policy Aims

Barking Abbey School believes and supports the following educational aims in respect of drugs, alcohol, tobacco and substance use and misuse:

1. To enable pupils to make healthy, well-informed choices by increasing knowledge, challenging attitudes, and developing and practising decision-making skills.
2. To provide accurate information about drugs, alcohol, tobacco and substance use.
3. To increase understanding about the implications and possible consequences of their use and misuse.
4. To widen the pupils' understanding about related health and social issues.
5. To enable pupils to identify sources of appropriate personal support.

Education

These aims are fulfilled by a programme of health education, which is appropriate to the pupil's age and level of development. This programme will be delivered mainly through PSHE (Personal, Social and Health Education) lessons but will be reinforced in other parts of the teaching curriculum. The school periodically invites outside speakers to further reinforce its commitment to health education. Members of the teaching and core staff are made aware of issues and policies by whole school INSET.

Drugs

The School considers that the use of illegal drugs or so-called 'legal highs' is likely to be damaging to a young person's health, safety, independence and respect of the law; and will also damage the integrity of the School community by possibly exposing others to temptation and to the risk of criminal proceedings. It should be noted that the school's definition of drugs includes illegal drugs (those categorised as Class A, B or C).

A programme of education about drugs will involve pupils during their time at the School. The programme will be arranged through the established curriculum, through the PSHE syllabus and through specially invited external speakers.

It is the policy of Barking Abbey School to discourage the use of illegal drugs or 'legal highs'. Any cases of the use or possession by pupils of such substances or of any drugs paraphernalia will be treated as a very serious breach of discipline. Controlled drugs found on a student must be handed as soon as possible to the police by the school.

A pupil becoming involved with drug misuse must expect to be dealt with according to the school's behaviour policy. Where there is reasonable cause for suspicion that a pupil may be involved with drugs, a pupil may be questioned and personal possessions searched. The school has the right to inform the police of the possession, consumption or supplying of an illegal drug, as it constitutes a criminal offence.

Procedures for Managing Drug Related Incidents

In response to any drugs related incident, it is essential that each situation is considered individually and that the needs and circumstances of the students are paramount.

If the situation leads to a medical emergency the school emergency aid procedures will be followed immediately.

In the absence of a medical emergency the Head Teacher/Safeguarding Lead will be informed, and an appropriate response considered.

Protocols for responding to the following drug related incidents, in line with national guidance, are outlined as flow charts in Appendix 1:

- **Parents/Carers/Others under the influence of drugs /alcohol on school premises**
- Student(s) under the influence of drugs /alcohol on school premises.
- **Students using medicines inappropriately on school premises.**
- Drugs and / or paraphernalia found on students and/or premises
- **Students making disclosure about their own or parents/carers/others use of drugs/alcohol**
- **Supplying (drugs/alcohol/tobacco) by students/parents/carers/others**

If we are presented with any other drugs related incidents not outlined in Appendix 1, we will refer to the DfE and ACPO guidance.

Unless there are exceptional circumstances, we will inform parents /carers at the earliest opportunity so that we can work together to support the student and to resolve difficulties.

Our aim is to enable all students to fulfil their potential. We will work with the student, their parents or carers and colleagues from other agencies to remove barriers to achievement and resolve any difficulties that exist. Drug related situations will be considered alongside other circumstances in the young person's life and not in isolation. We accept that it is never appropriate to respond in a way that is more punitive than that which might be considered by the police so that exclusion, whilst it remains an option, will be used as the very last resort.

Opportunities for supporting students following these situations include:

- Review with parents/carers after the incident
- Further drugs, alcohol and tobacco education
- Targeted support on a one to one basis
- Referral to an outside agency

Should a substance suspected of being illicit be found on the school premises it will be handed to the headteacher and, in the presence of another member of staff placed in a sealed container in the school safe until it can be delivered to or collected by a police officer. S/he will also be involved in advising the school on the most appropriate response to the situation. The Local Authority School Drug Adviser and Drug & Alcohol Action Team are also able to provide guidance and advice.

All staff will be made aware of the legal constraints on gathering evidence and questioning those involved. They will not take action without involving the co-ordinator.

Alcohol: Pupils are encouraged to adopt a sensible attitude towards alcohol. The effects on health of alcohol and its social implications will be taught and discussed as part of the curriculum, in the Personal, Social and Health Education course, and in tutorials. Alcohol is a prohibited item as outlined in the school's behaviour policy.

Smoking: Pupils and staff are forbidden to smoke on the school site. The effects on health of smoking will be taught and discussed as part of the curriculum, in the Personal, Social and Health Education course, and in tutorials. Tobacco, cigarette papers, e-cigarettes and shisha pens are prohibited as outlined in the school's behaviour policy.

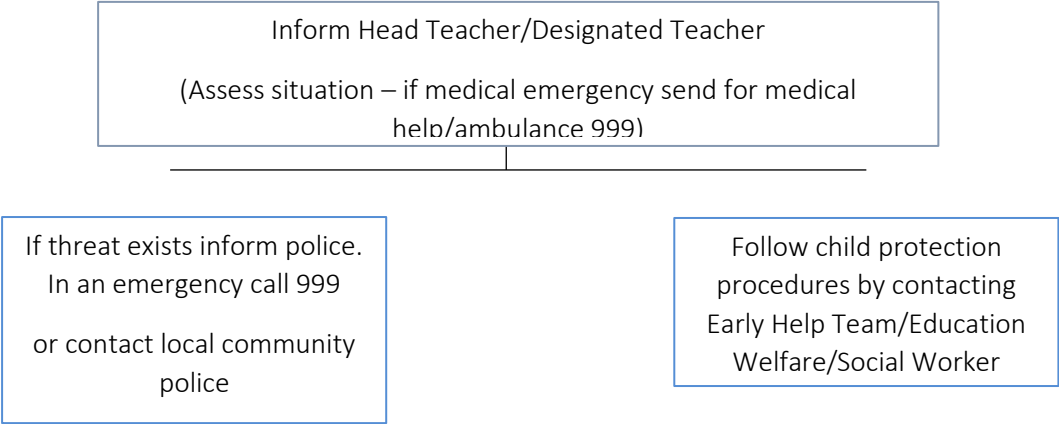
Appendix 1

Procedures for Managing Drugs Related Incidents

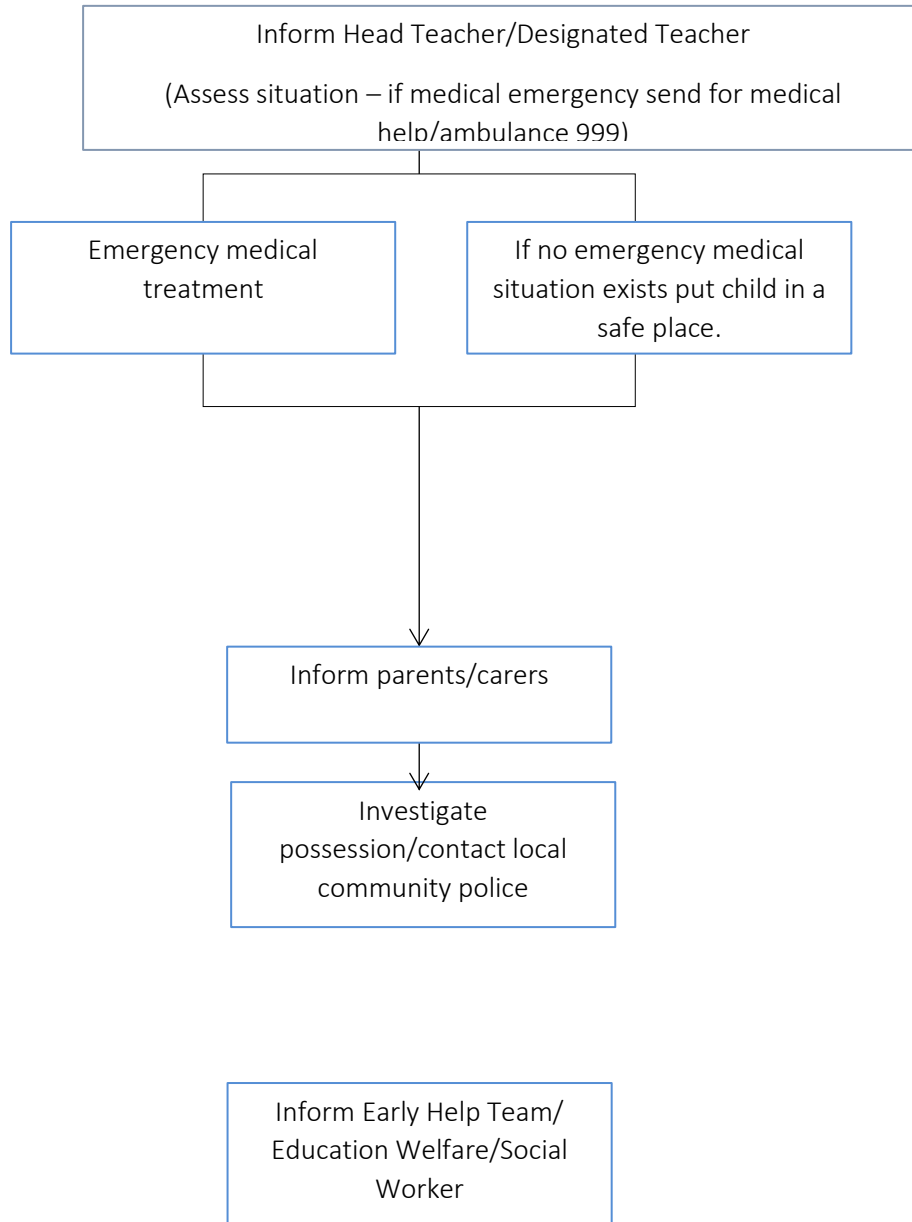
This appendix outlines our procedures for managing the following drugs related Incidents, as detailed in each flow chart:

- 1. Parents/Carers/Others under the influence of drugs/alcohol on school premises**
- 2. Student(s) under the influence of drugs/alcohol on school premises.**
- 3. Students using medicines inappropriately on school premises.**
- 4. Drugs and/or paraphernalia found on students and/or premises**
- 5. Student makes disclosure about their own or their parents'/carers'/others' use of drugs/alcohol**
- 6. Supplying (drugs/alcohol/tobacco) by students/parents/carers/others**

1. Parents/Carers/Others under the Influence of drugs/alcohol on school premises

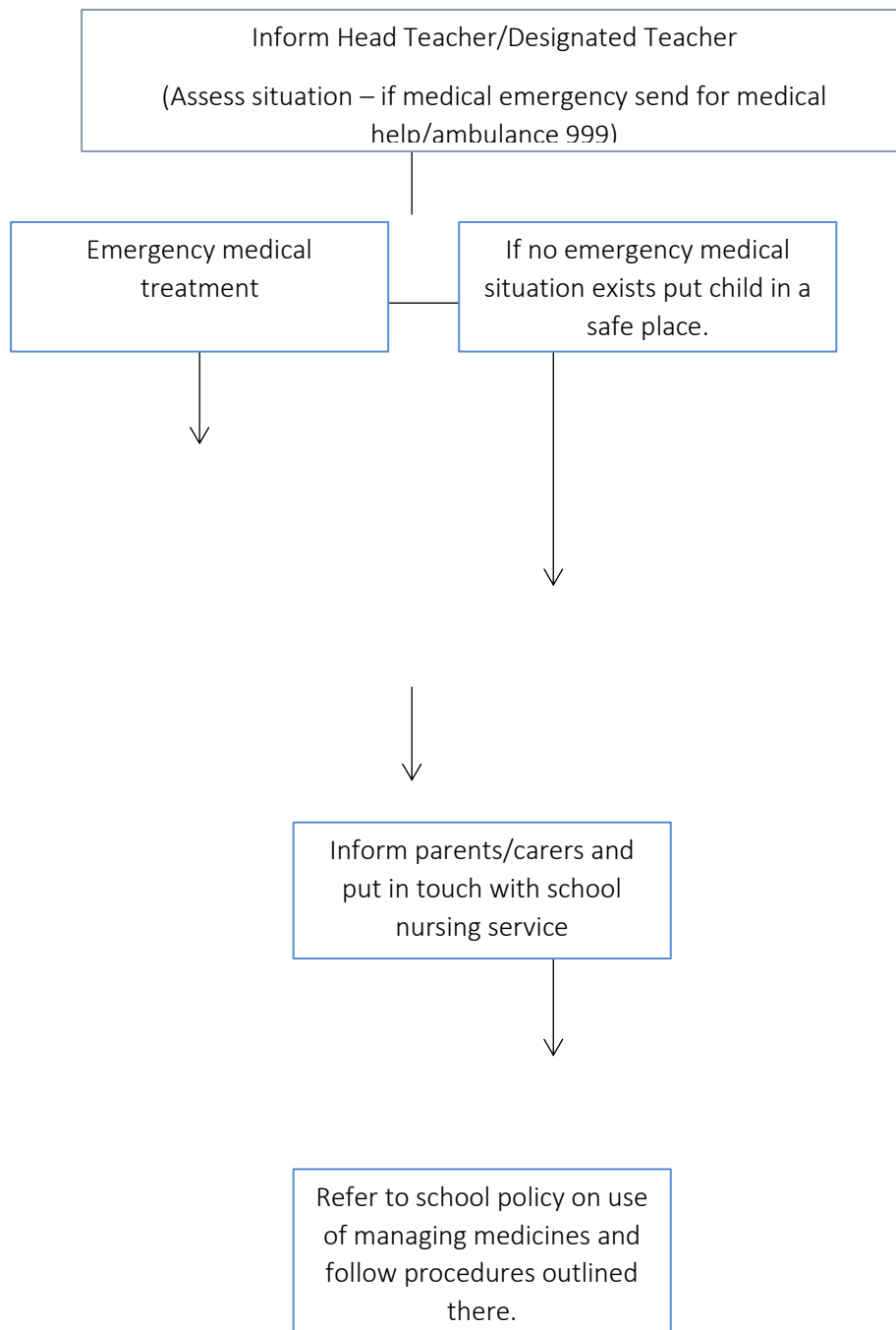


2. Student(s) under the influence of drugs/alcohol on school premises.

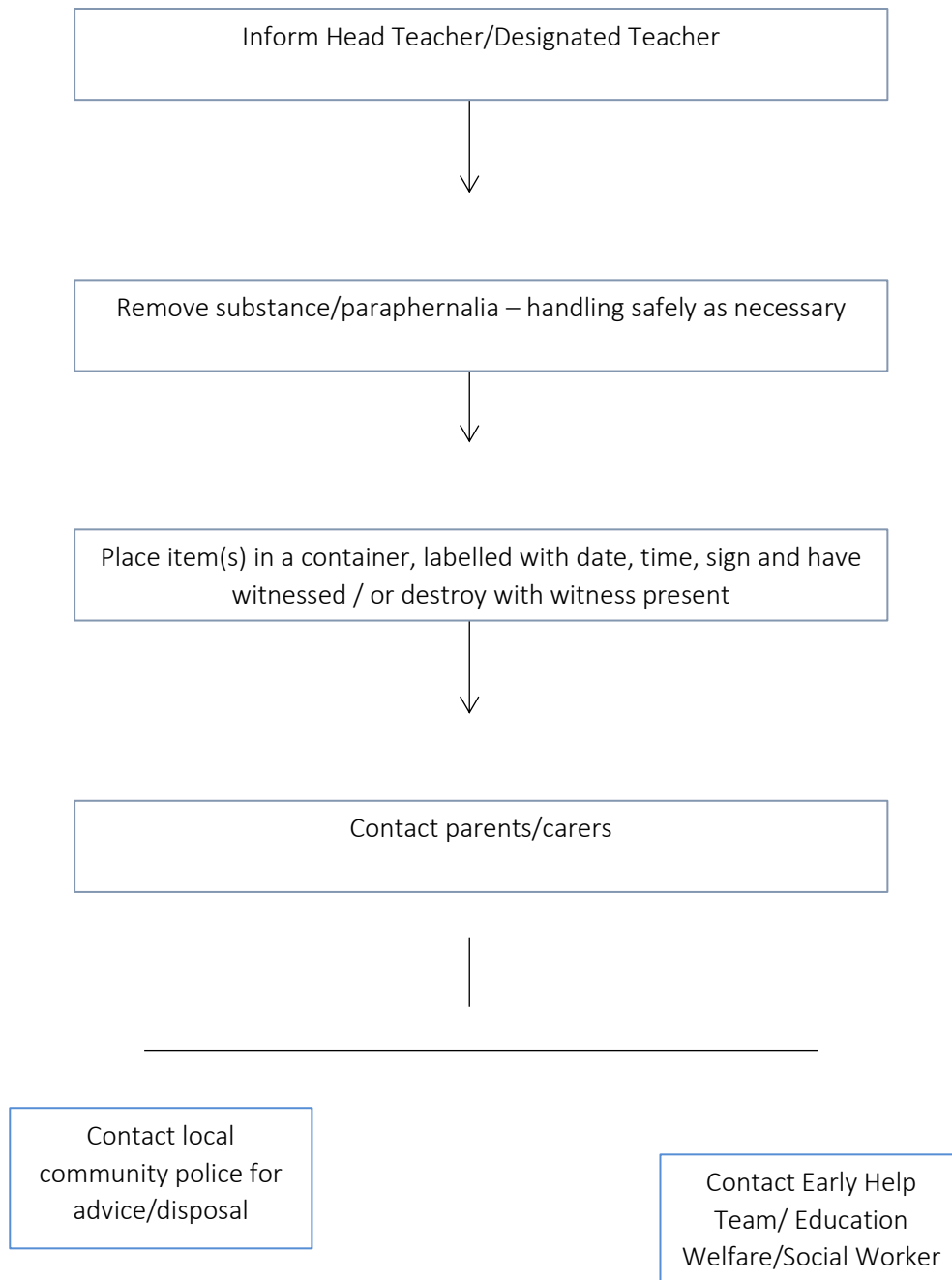


N.B. If tobacco is the drug used you may wish to follow school behaviour/discipline policy.

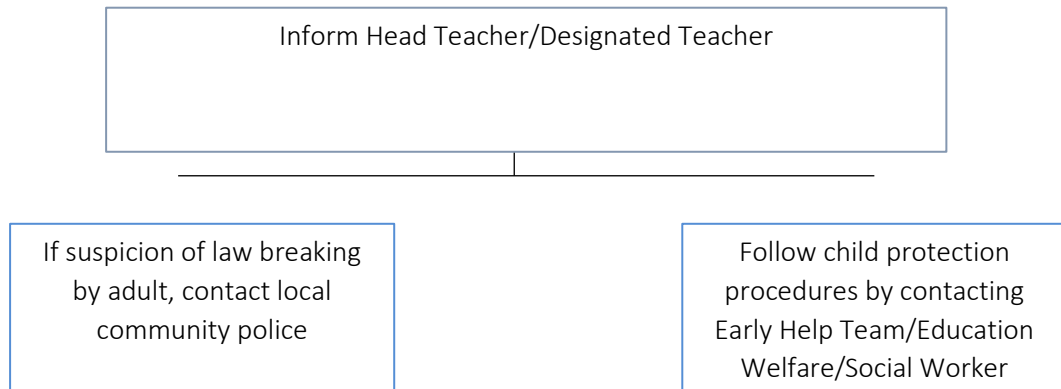
3. Students using medicines inappropriately on school premises.



4. Drugs and/or paraphernalia found on students and/or premises



5. Student makes disclosure about their own or their parents'/carers'/others' use of drugs/alcohol



6. Supplying (drugs/alcohol/tobacco) by students/parents/carers/others

